

25
YEARS
OF EXPERTISE



SETS[®]
SOLUTIONS

**HUMAN RESOURCES
MANAGEMENT SOLUTION**

**DATA CENTER SOLUTIONS
AND SERVICES**

**SECURITY, ANALYTICS & DATA
MANAGEMENT SOLUTIONS**

**CLOUD COMPUTING
SOLUTIONS**

**END USER
COMPUTING**

**NETWORKING &
SECURITY SOLUTIONS**



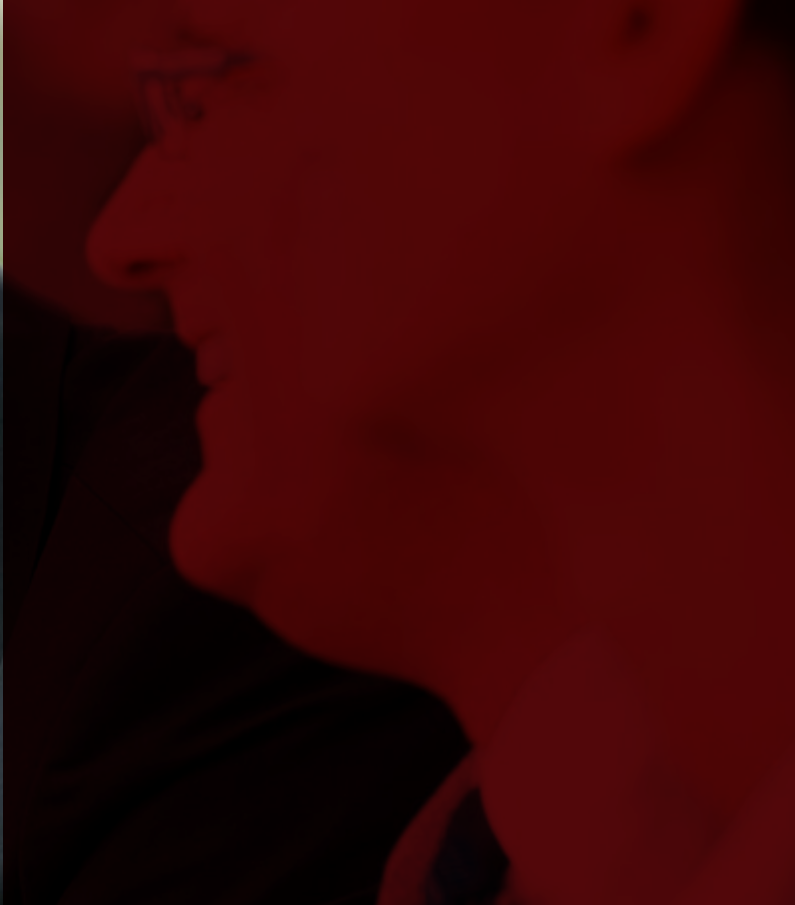
SETS IS A MAJOR IT SOLUTION PROVIDER IN THE REGION AND A KEY PLAYER IN THE TELECOMMUNICATION AND SECURITY INDUSTRY. WE PROVIDE CUSTOMERS WITH A COMPLETE IT INFRASTRUCTURE SOLUTION PORTFOLIO, BY PARTNERING WITH LEADING BRANDS AND VENDORS IN THE FIELD.



WITH OVER 25 YEARS OF EXPERIENCE AND MORE THAN 1,000 REFERENCES, SETS IS PROUD TO BE A MARKET LEADER IN THE HRMS INDUSTRY ACROSS THE MIDDLE EAST.

CONTENTS

02	About SETS
03	Regional Presence
04	Team & Expertise
05	Solutions
12	Partnerships
18	People365 Workflow
20	People365 Streams
21	People365 on the Cloud
22	People365 HRMS Mobile Application
23	People365 SMS
23	People365 Technology
24	Success Stories



OUR HRMS
IS ADOPTED BY
1,000
MEDIUM & LARGE BUSINESSES,
ACROSS **12** COUNTRIES

➤ SETS SYNOPSIS

Established in 1990 with headquarters in Lebanon, SETS is a leading information technology company in the Middle East providing customers with a wide range of technology solutions delivered by top experts in the field.

With over 25 years of experience in the HRMS industry, SETS major offerings include its flagship product “People365” – a comprehensive Human Resources Management System (HRMS) consisting of the Time Attendance, Payroll and HR modules. Having more than 1,000 references coming from leading companies in all types of industries, SETS has accumulated through the years an in-depth expertise in HRMS offerings, and is now recognized as a leading HRMS provider and consultant over the Middle East.

SETS has partnered with leading international brands and vendors in the IT industry to offer high-quality and innovative solutions and services. Some of the partnerships include: Huawei, HPE, Commvault, Nutanix, Splunk, Veeam, Quest, One Identity, Fortinet, Microsoft, Cisco, Vmware, Pivot3, Redhat, Barracuda, G4S, Symantec, APC, Safran, Honeywell, TBS, Citrix, and others.

SETS operates both regionally and globally, covering Lebanon, Jordan, Saudi Arabia, UAE, Qatar, Kuwait, Bahrain and Oman. Its portfolio of high-end products, services and solutions has empowered industries in various public and private sectors, including finance, manufacturing, contracting and real estate, hospitality, IT, insurance, media & design, NGOs, trading investment, and others.

➤ KEY APPLICATION AREAS

SETS allocates and utilizes most of its human, financial, technological and physical resources towards enterprise businesses. Moreover, SETS also serves small to medium-sized businesses, small offices and home offices.

➤ OUR MISSION

To provide creative turnkey IT solutions and top-of-the-line services to any business by using leading global brands, retaining niche talent, maximizing customer value, being socially and ecologically responsible and striving for quality management excellence.

➤ OUR VISION

To become the leading innovator and supplier of IT solutions and services, on the strength of sustained customer loyalty, strong employee retention and solid financial growth.

➤ REGIONAL PRESENCE

In 1999, SETS established operations in the UAE making its first foray into the Gulf with key products such as Time Attendance and Biometric machines. Since inception, SETS has been keen on building strategic partnerships aimed at catering to mid and large size enterprises. In 2003, having diversified its product offerings and association agreements, SETS expanded its regional presence to include most of the Gulf region.

SETS currently has offices in Lebanon, UAE, Saudi Arabia, Jordan, and also covers Cyprus, Bahrain, Kuwait, Oman, Qatar, Egypt and Algeria.



OFFERING STATE-OF-THE-ART SOLUTIONS THAT MEET YOUR BUSINESS' NEEDS

SOLUTIONS

Having partnered with leading international vendors, SETS offers best-of-breeds enterprise solutions targeting small to high end businesses. Our aim is to respond to customers' business needs, while following best practices and the latest industry technology trends.

SETS solution proposals are always built to ensure a high Return on Investment (ROI), while lowering the Total Cost of Ownership (TCO) and reducing management costs. We assist customers in managing the ever-growing information explosion while keeping costs in check with a quick time to market.

SETS enterprise solutions covers all major business requirements in various sectors within the Lebanese and Regional markets including banks, financial institutions, healthcare, telecommunications, education and government and public institutions.

SETS offers tailored end-to-end IT solutions to address all major business requirements including:

- Intelligent business decision-making.
- Low latency, high performance systems for main business applications.
- Protection from data theft or tempering.
- Consolidation of server and storage environments to reduce management costs and increase resource utilization.
- Increased productivity through a centralized business environment, enabling the IT team to address other critical tasks.

A systematic modern approach to IT will allow businesses to maximize productivity and customer satisfaction, while increasing business profitability.

Additionally, SETS addresses business continuity concerns, offering solutions in single-site, multi-site, or mixed environments. No matter the challenges, businesses can be confident that their services are online, and their data is secure based on the agreed recovery point and recovery time objectives.

TEAM

SETS is constantly striving to improve its employees' technical and managerial knowledge and skills to ensure its training programs will meet the needs of the marketplace.

Accordingly, SETS trainings and development programs are presented by an experienced team of professionals from the region, allowing the exchange of ideas and leveraging of expertise among SETS employees. Moreover, SETS encourages all of its employees to continuously develop their skills and maintain a leader's spirit and attitude in the marketplace.

EXPERTISE

We believe our customers are lifelong partners, to whom we're committed to offering only the best of breed IT products and solutions. Our staunch dedication to this belief drives us to pursue a path of progress towards customer service perfection. With this objective in mind, our priority has been to build an extensive skill-set that leverages authoritative expertise in the form of professional certifications, thereby maintaining our reputation as a leading services provider.

In a fast-changing industry, keeping up to date with sector developments has enabled SETS certified engineers to provide vital services to our customers, through their high expertise.



DATA CENTER SOLUTIONS AND SERVICES

Take your data center into the future.

Leverage your current technology while seamlessly incorporating innovations tailored to your needs by eliminating redundancy and unifying management, accelerating IT service delivery, and reducing operation costs while increasing performance.

Servers:

Maximize operational effectiveness and optimize flexibility at any scale. Focused on accelerated performance, enhanced automation and simplified management, our line-up of servers can help you experience worry-free computing through: greater IT efficiency, superior IT agility and better IT reliability.

Storage:

Achieve faster response times and lower your total cost of ownership (TCO) with data center and virtualization strategies designed to match your workloads. We can simplify your organization's storage with scalable, end-to-end solutions and services that are easy to deploy and use, saving you time and money, and getting your attention back on business.

Converged Infrastructure:

Help reduce costs and automate operations with converged solutions that integrate servers, storage, networking and management into single solutions. Our converged infrastructure and hyper-converged solutions allow you to tailor infrastructure to your workloads within the minimum footprint.

Data Center Virtualization:

Create an efficient, responsive IT environment by virtualizing your entire data center. When you reduce your data center footprint by consolidating your physical server, storage and networking hardware, you can also improve asset utilization, lower capital and power and cooling costs, reduce management touch points and accelerate IT service delivery.

Business Continuity and Disaster Recovery:

Prepare your organization for disruptions of all shapes and sizes. Protect your valuable information, maintain productivity, and speed up recovery today through our business continuity and disaster recovery services.

Software Defined Data Center:

Rapidly develop, automatically deliver and manage all of your enterprise applications, no matter where they reside, from one, unified platform. Benefit from a data storage facility in which all elements of the infrastructure – networking, storage, CPU and security – are virtualized and delivered as a service.

From the device, to the data center, to the cloud, SETS Enterprise Solutions can help you make faster and more informed decisions, streamline your IT operations, increase end-user productivity, and most importantly, keep your data secure. Our capable open standards solutions help you make the most of your existing investments and handle the demands of the future.

CLOUD COMPUTING SOLUTIONS

Integration Platform as a Service (iPaaS):

Connect any combination of cloud and on-premises applications — without software or appliances — using Boomi, the industry's largest integration platform as a service (iPaaS).

Public, Private, Hybrid Cloud:

Deploy and manage enterprise-class applications across your private, public and hybrid clouds through our top-tier partners: VMware, Microsoft and Citrix.

Cloud Marketplace:

Enables users to launch cloud resources and applications with a click of a button while providing the security, governance, and management tools you require.



SECURITY, ANALYTICS & DATA MANAGEMENT SOLUTIONS

Business Intelligence and Data Warehousing:

Turn the influx of massive data into lucrative breakthroughs across your entire organization by extracting meaningful insights that help you innovate, drive efficiencies, and expedite a rapid return on investment.

Big Data Analytics:

We can help you make sense of all the big data collected and understand how effective strategies can catapult you past your competition.

High-Performance Computing:

HPC solutions combine multiple systems to perform complex calculations so you can achieve a supercomputer’s performance level — without the cost.

Data Protection:

Protect data wherever it resides – on devices, external media and in public cloud storage.

Application Performance Monitoring:

Simple-to-use performance monitoring and reporting system which allows you to quickly determine the current and past performance of the different system components such as the MTA, the appliance operating system and update services, and more.

Identity Management:

Define access policies for your organization through our Identity Manager Solutions. You have the power to analyze, approve and fulfill unstructured data access requests to files, folders and shares, ensuring that sensitive, unstructured data is only accessible to approved users. Identity Manager automates the request-and-approval workflow, ensuring security and reducing the burden on your IT staff.

User Access Auditing:

Ensure tight control of user and system access while simplifying compliance and auditing. Capitalize on automated functions and consolidated reporting to easily demonstrate compliance.

Windows Migration and Management:

Migrating, consolidating and restructuring mission-critical application environments can be major undertakings. You can improve planning and streamline processes by accelerating the time-to-project completion while minimizing the costs, risks and disruptions to users.

Data Center Management:

Through a broad portfolio of data center and cloud management software solutions we can help you achieve your IT modernization objectives and meet your business needs while simplifying IT management.

Turn the influx of massive data into lucrative breakthroughs across your entire organization by extracting meaningful insights that help you innovate, drive efficiencies, and expedite a rapid return on investment.

We can help you make sense of all the big data collected and understand how effective strategies can catapult you past your competition.

HPC solutions combine multiple systems to perform complex calculations so you can achieve a supercomputer's performance level — without the cost.

Protect data wherever it resides – on devices, external media and in public cloud storage.

Simple-to-use performance monitoring and reporting system which allows you to quickly determine the current and past performance of the different system components such as the MTA, the appliance operating system and update services, and more.

Define access policies for your organization through our Identity Manager Solutions. You have the power to analyze, approve and fulfill unstructured data access requests to files, folders and shares, ensuring that sensitive, unstructured data is only accessible to approved users. Identity Manager automates the request-and-approval workflow, ensuring security and reducing the burden on your IT staff.

Ensure tight control of user and system access while simplifying compliance and auditing. Capitalize on automated functions and consolidated reporting to easily demonstrate compliance.

Migrating, consolidating and restructuring mission-critical application environments can be major undertakings. You can improve planning and streamline processes by accelerating the time-to-project completion while minimizing the costs, risks and disruptions to users.

Through a broad portfolio of data center and cloud management software solutions we can help you achieve your IT modernization objectives and meet your business needs while simplifying IT management.



➤ END USER COMPUTING

Enable workforce productivity and collaboration with secure, manageable solutions

MOBILE COMPUTING SOLUTIONS

Mobile computing has transformed the way people interact with each other and with the world around them. We offer solutions that help organizations better plan, deploy and manage mobile and BYOD environments to help drive greater business value from their IT investments.

Bring Your Own Device (BYOD):

Empower your workforce to be more productive, more satisfied and better able to serve customers. Drive business performance by streamlining processes and enabling IT control and innovation through comprehensive security and simplified management.

Mobile Enterprise Management (MEM):

Securely manage and provision access to smartphones and tablets from any device with a browser and Internet connection. Also enables you to manage applications and content on the devices.

End-Point Management:

Provisioning, deploying and managing systems do not have to be costly and time-consuming tasks. With our solutions, you can deploy systems, manage software updates, install patches and conduct asset inventories efficiently so IT staff can refocus on more strategic projects.

DESKTOP VIRTUALIZATION

Enable your IT professionals to protect vital content, reduce the time and cost of managing desktops, support a vast array of clients, and enable user mobility.

Easy VDI Solutions:

Make desktop virtualization easier than ever to plan, deploy, scale and run on any budget. We provide you with simple, manageable, reliable solutions that match your environment and specific use cases by adapting pre-configured offerings with predictable scaling and management costs.

Custom VDI Solutions:

Facilitate IT success. Integrate reliable data center components, endpoints and desktop virtualization software from our partners, Citrix, Microsoft and VMware with your existing environment.

Thin Clients For Cloud Client-Computing:

Integrate into any virtualized or web-based infrastructure while meeting your individual budget and performance requirements.

Take control of your network's future; improve your infrastructure, gain performance and lower costs - all while remaining flexible to adopt new innovations.

➤ NETWORKING & SECURITY SOLUTIONS

Comprehensive Suite of Networking Solutions:

Purpose-built to make managing and operating enterprise networks easier for data centers, campus and branch environments.

Next Generation of Firewalls (NGFW):

The latest technologies including Cisco & Barracuda for application intelligence, control, and real-time visualization, along with tightly integrated intrusion prevention and malware protection.

Communication Solutions:

A Complete CISCO IP telephony and teleconference solutions.

Wireless, Access and Chassis Solutions:

Enables you to rapidly deploy and scale campus networks, maximize efficiency, and secure the edge, devices and information — all while leveraging existing investments and reducing capital expenditures.

Web Application Firewall (WAF):

Protect web applications from data breaches and defacement. Organizations can ensure robust security with a Barracuda Web Application Firewall hardware or virtual appliance, deployed either on-premises or in the cloud.



SETS PARTNERSHIPS

SETS provides customers with a complete IT infrastructure solution portfolio by partnering with top experts in the field.

These strategic alliances that SETS progressively builds are an integral part of the expertise we offer, helping us develop a competitive edge in the Middle East region.

innovate
Technologies

PEOPLE 365
BY SETS

HUAWEI
Enterprise Partner
VAP

Hewlett Packard
Enterprise

Symantec

Microsoft

splunk

COMMVAULT

redhat

APC
Legendary Reliability

Honeywell

TBS
EXCLUSIVE
AGENT
LEBANON

NUTANIX

vmware

FORTINET

Pivot3

CISCO

Barracuda

G4S

CITRIX

VEEAM
IT JUST WORKS!

SAFRAN
Morpho

Quest

ONE IDENTITY

THE COMPETITIVE EDGE



Joint venture with SETS an Established company in 1990 with headquarters in Lebanon, IMMOVATE is a leading ICT company in the Middle East assisting customers with the right ecosystem for a smooth digitalization journey.

With over 25 years of combined experience in the Telecom & IT industries, IMMOVATE has partnered with leading international brands and vendors in the IT & Telecommunication industry to offer high-quality and innovative solutions and services.



Huawei is a leading global information and communications technology (ICT) solutions provider. Driven by a commitment to sound operations, ongoing innovation, and open collaboration, they have established a competitive ICT portfolio of end-to-end solutions in telecom and enterprise networks, devices, and cloud technology and services.

Their ICT solutions, products, and services are used in more than 170 countries and regions, serving over one-third of the world's population. With 180,000 employees, Huawei is committed to enabling the future information society, and building a Better Connected World.



Hewlett Packard Enterprise (HPE) is an industry leading Technology Company with the most comprehensive portfolio, spanning the cloud to the data center to workplace applications, helping customers around the world make IT more efficient, more productive and more secure for more than 75 years.

HPE delivers high-quality, high-value products, consulting and support services in a single package with industry-leading positions in servers, storage, wired and wireless networking, converged systems, software, services and cloud.



Founded in 1975, Microsoft is the worldwide leader in devices and services that help people and businesses realize their full potential. Microsoft offerings include: Business Software, Design Tools, Developer Tools, Entertainment Products, Hardware, Home & Educational Software, Tablets, Search, Advertising, Servers, Windows Operating System, Windows Applications & Platforms, Smartphones and Cloud Computing.

Since our partnership began in 2008, SETS has been providing Microsoft licenses and solutions through different programs. SETS additionally offers professional services on Microsoft Solutions implementation, deployment, configuration as well as support. Moreover, People365, our leading HRMS solution, is based on Microsoft .NET Technology and interfaces with Microsoft Dynamics GP, AX, and NAV.



Symantec is a global leader in providing security, storage and systems management solutions to help customers – from consumers and small businesses to the largest global organizations – secure and manage their information against more risks at more points, more completely and efficiently than any other company.

SETS brings in decades of diversified experience and a history of success in adapting Symantec products, combining business intelligence with technical savvy. SETS provides Symantec solutions in a comprehensive array of technology-related services to help organizations reduce data center complexity, minimize cost, and maximize performance.



VMware is the industry-leading virtualization software company, which empowers organizations to innovate and thrive by streamlining IT operations. By virtualizing infrastructure — from the data center to the cloud to mobile devices — VMware enables IT to deliver services from any device, anytime, anywhere.

SETS has been a pioneer in delivering VMware-based solutions for a large customer base in Lebanon. Given our extensive reach, which is backed by a professional team in charge of execution and support, SETS is a market leader when it comes to providing private and hybrid cloud solutions as well as VDI environments.



Honeywell is a Fortune 100 diversified technology and manufacturing leader, providing products, software and connected solutions that improve productivity, workplace safety and asset performance across the globe.

This strategic partnership will enable SETS to broaden its portfolio, allowing customers to benefit from the latest technologies in Access Control Systems, Video CCTV Systems, Intrusion Detection Technologies and Fire Systems.



Biometric technology made in Switzerland:

Touchless Biometric Systems offers flexible, functional hardware and software for access control and time recording. TBS develops all-round biometric solutions geared to a wide range of customer requirements that can be readily integrated into existing systems. All TBS products impress with their reliability, functionality and plain aesthetics.

This strategic partnership will enable SETS to broaden its portfolio with a wide range of innovative security and control systems allowing its customers to select the solution that best meets their needs and benefit from the latest technologies in biometric devices.



Nutanix is the industry leader in hyperconverged infrastructure and software-defined storage. The world's most advanced enterprise datacenters rely on Nutanix to power their mission-critical applications and services with one OS.

Nutanix makes infrastructure invisible, elevating IT to focus on the applications and services that power their business. The Nutanix Enterprise Cloud Platform blends web-scale engineering and consumer-grade design to natively converge server, storage, virtualization and networking into a resilient, software-defined solution with rich machine intelligence.



Citrix is leading the transition to software-defining the workplace, uniting virtualization, mobility management, networking, and SaaS solutions to enable new ways for businesses and people to work better. Citrix solutions power business mobility through secure, mobile workspaces that provide people with instant access to apps, desktops, data and communications on any device, over any network and cloud.

SETS is providing cloud solutions based on Citrix offerings, including desktop virtualization, server virtualization and application virtualization services. In addition to enterprise mobility solutions and networking and security solutions.

SETS HAS PARTNERED WITH LEADING INTERNATIONAL BRANDS AND VENDORS IN THE IT INDUSTRY TO OFFER HIGH-QUALITY AND INNOVATIVE SOLUTIONS AND SERVICES.



Veeam recognizes the new challenges companies across the globe face in enabling the Always-On Business, a business that must operate 24/7/365. To address this, Veeam has pioneered a new market of Availability for the Modern Data Center by helping organizations meet recovery time and point objectives (RTPO) of less than 15 minutes for all applications and data, through a fundamentally new kind of solution that delivers high-speed recovery, data loss avoidance, verified protection, leveraged data and complete visibility. Veeam protects 8.4 million VMs for more than 145,500 customers worldwide.

SETS provides the full portfolio of Veeam products that leverage virtualization, storage, and cloud technologies. With their solutions, Veeam enables the modern data center in assisting organizations save time, mitigate risks, and dramatically reduce capital and operational costs.



Cisco is the worldwide leader in IT that helps companies seize the opportunities of tomorrow. SETS offers Cisco-based Internet-working solutions including routing, switching, IP telephony and security solutions for numerous companies, big and small.



Splunk takes your machine data and make sense of it. IT sense. Security sense. Business sense. Common sense. Splunk products deliver visibility and insights for IT and the business. Splunk was founded to pursue a disruptive new vision: make machine data accessible, usable and valuable to everyone.



G4S is the leading global integrated security company, specializing in the provision of security products, services and solutions. G4S has adopted SETS Time Attendance application and has integrated it with its Multimax (SMS) access control application. This is an added value that helped G4S provide their clients with advanced time management features that are flexible to fit any type of industry.



Fortinet provides top-rated network and content security, as well as secure access products that share intelligence and work together to form a cooperative fabric. Their unique security fabric combines Security Processors, an intuitive operating system, and applied threat intelligence to give you proven security, exceptional performance, and better visibility and control--while providing easier administration.



Pivot3 was founded in pursuit of a vision – to radically simplify the datacenter by collapsing storage, compute and network resources onto a powerful, easy to deploy solution that would reduce cost, risk and complexity. Since then, Pivot3's smart technologies have helped thousands of enterprises around the world achieve their operational objectives and business goals.

Pivot3 has accomplished this with an ecosystem of technology, channel, and system integration partners all focused on enabling a smarter IT infrastructure to lay the foundation for the software-defined datacenter of the future.



APC is a leading provider of power protection products and services including UPS and surge suppressors. SETS has been one of the masterminds behind providing services/solutions to companies of various sizes and specializations. APC UPS Systems protects sensitive electronics from power disturbances and prevents costly downtime and repairs. They also provide environmental monitoring in order to protect hardware investments.



Safran Morpho is a leading manufacturer of fingerprint identification devices. Morpho offers a unique multimodal product portfolio with fingerprint, multimodal (combination of finger vein and fingerprint biometrics) and facial devices. SETS is a regional platinum distributor of Safran Morpho and provides a solution that can be combined with the Time Attendance management application.



Quest provides software solutions that simplify systems and information management. Spend less time on administration and more time on business innovation. Our vision is to deliver technology that eliminates the need to choose between efficiency and effectiveness



We believe that security is much more than the practice of denial and restriction. That's why One Identity's design and integration philosophy is that our solutions must add agility and efficiency to an organization – regardless of size or market – as well as secure its digital assets. One Identity delivers identity governance, access management, and privileged account management solutions that facilitate and secure your digital transformation.



Barracuda Networks is the worldwide leader in security, application delivery and data protection solutions.

SETS offers Barracuda solutions for security, networking and storage based on network appliances and cloud services. Barracuda Networks includes security products for e-mail, web surfing, web hackers, as well as protection from instant messaging threats such as spam, Trojans and viruses. They also include web filtering, load balancing, application delivery controllers, message archiving, NG firewalls, backup services and data protection.



Red Hat is the world's leading provider of open source solutions, using a community-powered approach to provide reliable and high-performing cloud, virtualization, storage, Linux, and middleware technologies.



Commvault's data protection and information management solutions provide mid- and enterprise-level organizations worldwide with a significantly better way to get value from their data. Commvault can help companies protect, access and use all of their data, anywhere and anytime, turning data into a powerful strategic asset.



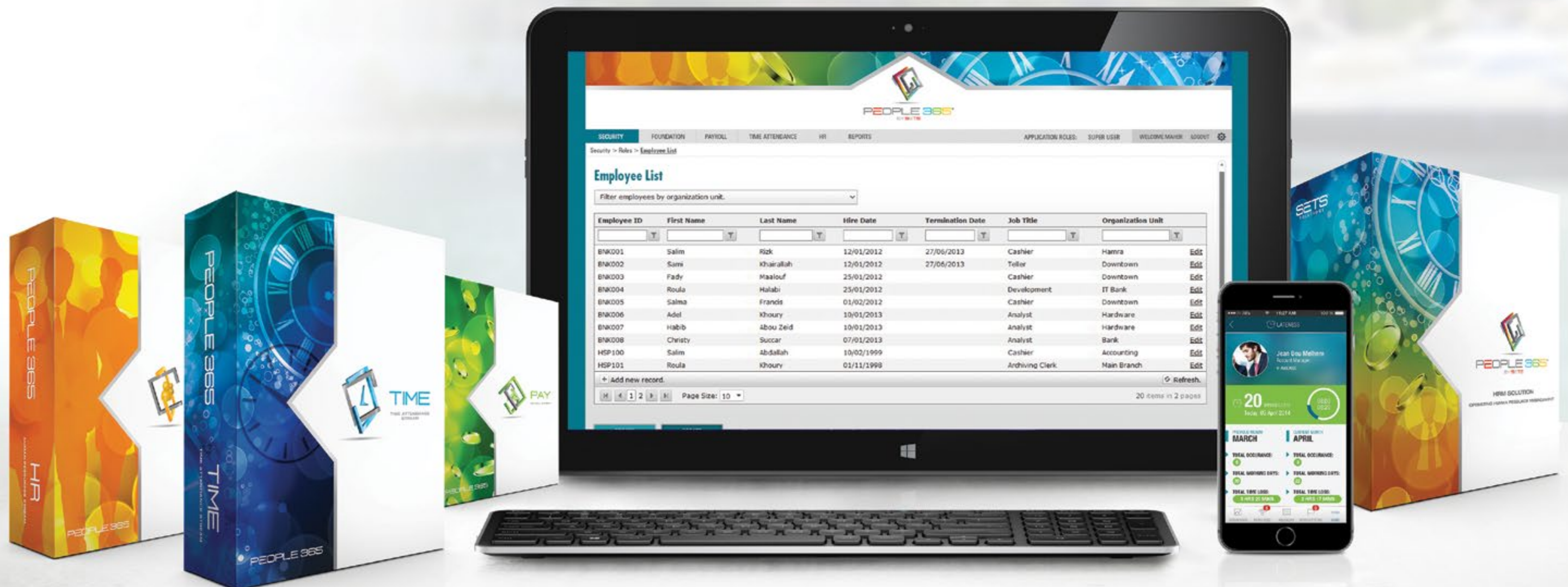
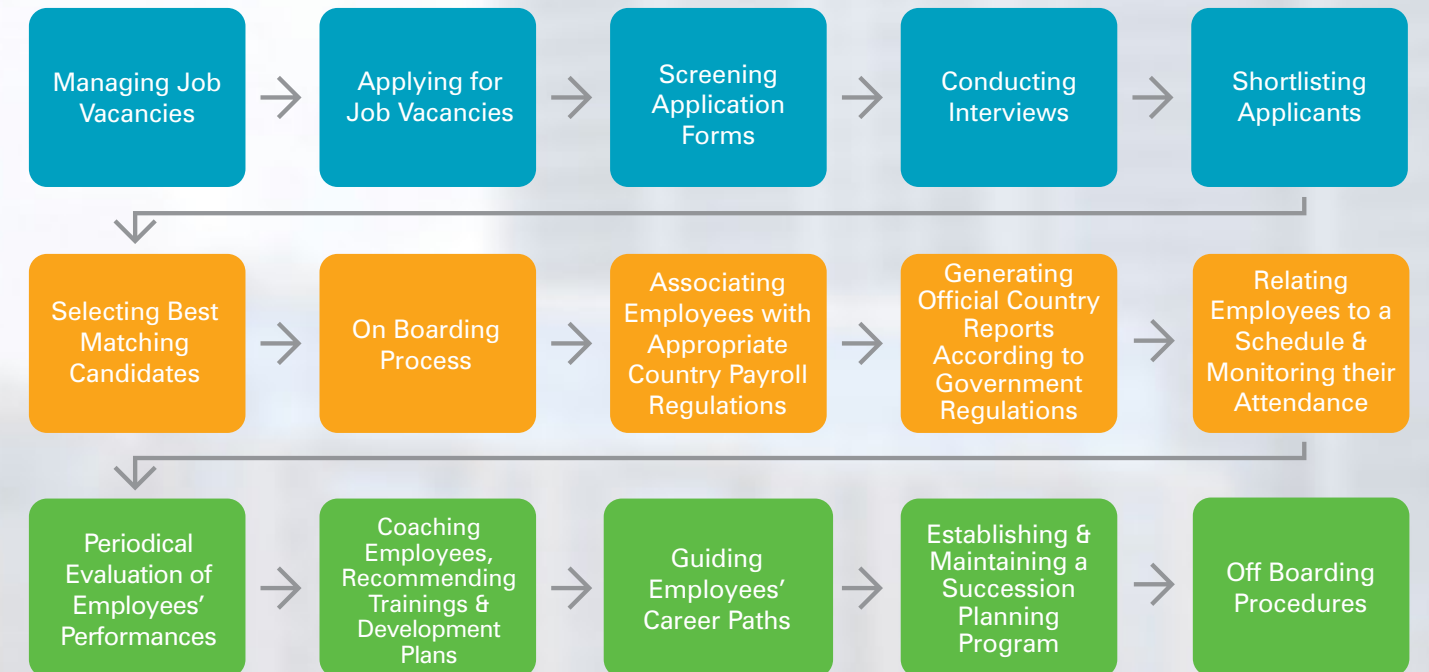
OPTIMIZING HUMAN RESOURCES MANAGEMENT

People365 is a HRMS application that integrates all the human facets of the business including Time Attendance, Payroll, and Human Resource streams. Our HRMS application is developed to facilitate the comprehensive management of every industry's human resources. It helps reduce the time spent on monitoring and analyzing attendance information, while simplifying and enhancing payroll generation.

The system also facilitates the recruitment and management of employees' trainings and career paths.

People365 is developed to help companies optimize their human capital management through tools that capture and manage the complete work cycle, from headhunting human talent up to retirement.

PEOPLE365 WORKFLOW





PEOPLE365 STREAMS

TIME

THE TIME ATTENDANCE STREAM

MANAGE TIME

PAY

THE PAYROLL STREAM

AUTOMATE PAY

HR

THE HUMAN RESOURCES STREAM

MASTER HR

TIME BENEFITS

- ◊ Caters for real time attendance status.
- ◊ Has the ability to support flexible employees' shift structures and plans.
- ◊ Tracks employees' attendance, calculates their absences and overtime hours, and controls their vacations.
- ◊ Defines easily how the system shall respond with employees' late arrivals, early leaves, missed hours, and sends the related files for payroll generation.
- ◊ Provides companies with an immediate ROI by eliminating payroll errors, hence reducing the common discrepancies associated with manual computing.
- ◊ Saves time and effort as opposed to the tardiness associated with traditional collection of time attendance information.
- ◊ Grants online access to employees through a self-service interface, thus providing awareness and mobility to check and operate different requests.
- ◊ Provides a powerful reporting tool.
- ◊ Integrates well with other applications.

PAY BENEFITS

- ◊ Allows the user to fully operate the various payroll information and related transactions while complying with various governmental regulations.
- ◊ Organizes, integrates, and simplifies complex payroll processes through an automated payroll generation wizard.
- ◊ Provides an impressive reporting database that adheres to all the local official requirements.
- ◊ Caters for customized and automated reports, with the ability of saving filtered criteria for recurrent use.
- ◊ Creates an environment of secure data management and transactions.
- ◊ Allows the transfer of salaries to banks based on a user-defined interface.
- ◊ Interfaces with international ERP solutions.

HR BENEFITS

- ◊ Enables companies to effectively and pro-actively manage human capital through a complete recruitment process, matching the right people to the right place.
- ◊ Pinpoints the exact gap in an employee's performance through periodic performance appraisals.
- ◊ Enables HR to effectively manage, motivate, and retain employees talent, following an appropriate career path and a reliable development plan.
- ◊ Ability to assign appropriate trainings to employees, to increase their productivity and corporate performance.
- ◊ Consolidated employee information from recruitment till end of service.
- ◊ Greatly reduces time wasted on routine tasks.
- ◊ Provides reliable and comprehensive reports, with advanced graphical mode.

PEOPLE365 ON THE CLOUD

SETS is the first company in the Middle East to develop a localized HRMS application built on .NET technology that is hosted on the cloud.

The cloud promises to change how you access information as profoundly as the printing press altered civilization. Organizations will be able to virtualize almost every aspect of activity, starting with IT, granting CIOs the rare opportunity to reinvent their roles. The big question is timing. Using the cloud, you now have the potential to expand your offerings into broad shared services.

SETS HRMS (People365) is hosted in a highly scalable and reliable data center with 24 hour surveillance and almost 0% downtime. Moving our HRMS into the cloud and adapting the concept of Software-as-a-Service (SaaS) will have an outstanding impact.



Key Benefits of Cloud

- Moving from capital expenditure to operational cost.
- Infrastructure paid by the host.
- Reduced costs.
- High availability reaching 99.98%.
- Application is hosted in highly scalable and reliable data centers with 24h monitoring.
- No software licensing costs.
- No new infrastructure requirements eg: servers.
- Service level agreement that governs the service engagement.

Other Benefits:

- ◊ Hosted locally in the region.
- ◊ Lower cost especially for SME's that do not want to add capex on their newly-established business.
- ◊ Unified expenses limited to subscription fees that cover hosting, licenses, upgrades, as well as support and maintenance.
- ◊ Exempts the SME from the managed services expenses and operation management.
- ◊ Pay-as-you-use structure (governed by a service contractual agreement).
- ◊ Accessibility from anywhere around the world (rendering the old fashioned tether with the physical presence of the software obsolete).
- ◊ Energy Saving.

Private Cloud:

There will always be clients who will want to have their own in-house facilities for security reasons. The advantages of the virtualized cloud infrastructure can also yield excellent benefits in this situation: companies create "private clouds" for use by other companies that pay to use them on a "members-only" basis, thus resolving the diversity and security issues.

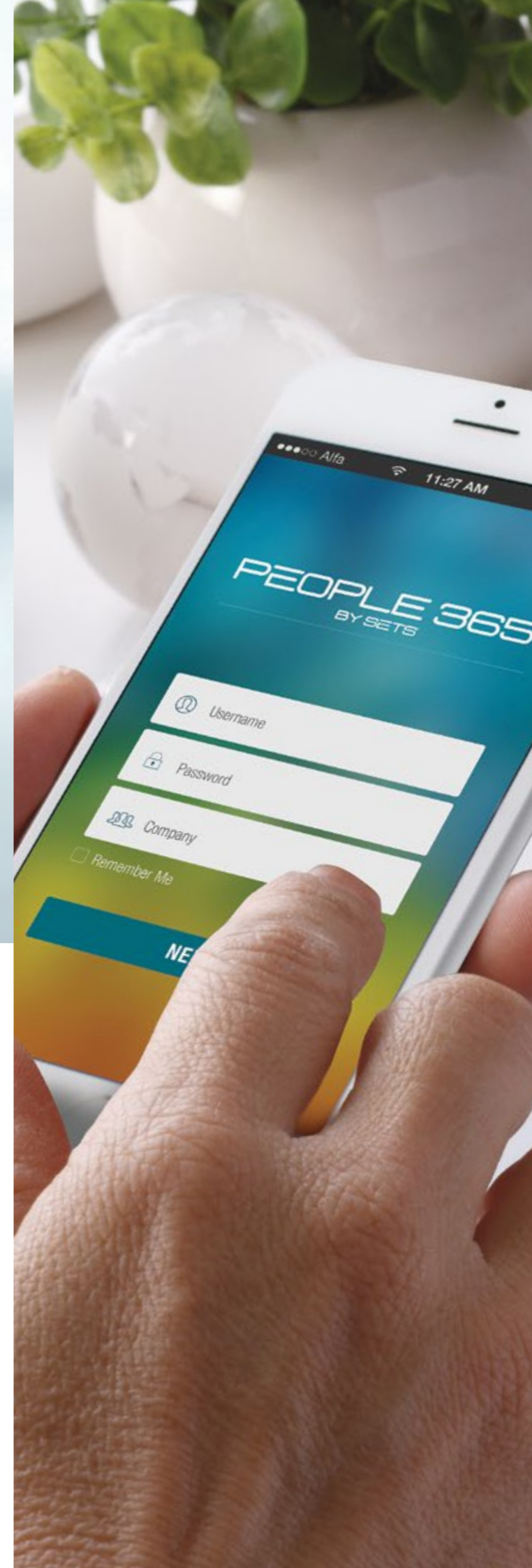
PEOPLE365 HRMS MOBILE APPLICATION & SMS

People365 Mobile Application

WITH 25 YEARS OF EXPERIENCE IN THE HRMS INDUSTRY, PEOPLE365 MOBILE APPS BRINGS OUR WEALTH OF KNOWLEDGE TO YOUR FINGERTIPS.

Our developers and designers are the most qualified and creative in their fields, and sit at the forefront of new technology development and adhere to the highest standards of the mobile web industry. We are excited to offer the HR industry new and innovative mobile technologies specifically designed to help streamline productivity, and save time and money. As the entire workforce is now totally on the move, the need to have a mobile system has emerged in force. This is to keep managers always informed and facilitate their responsiveness to their employees' requests while mobile.

People365 Mobile Apps thus allows managers to avoid request bottlenecks and stay informed about their staff readiness. It provides decision makers, who are always on the move, with immediate and reliable access to information, for better workforce management. With People365 Mobile Apps, we are revolutionizing the way HR operates. Managers and decision makers will be ahead of the curve as they will always be informed about the entire workforce and responsive to their ongoing requests – anytime, anywhere.



PEOPLE365 SMS

People365 SMS is a cell phone notification service that helps update employees and managers about certain issues and events taking place within the organization.

These notifications include HR-related issues, which range from a wide array of topics such as:

- ◇ Salary releases
- ◇ Vacation balances
- ◇ Mass or individual events
- ◇ Individual tasks
- ◇ And others

PEOPLE365 TECHNOLOGY

People365 is based on .NET Technology. The solution is using:

- ◇ Windows Communication Foundation
- ◇ Windows Workflow Foundation
- ◇ Entity Framework 4.5
- ◇ .NET Framework 4.5
- ◇ ASP. NET & AJAX
- ◇ Telerik Advanced RAD Controls

People365 interfaces with international ERP solutions. This is done directly on the database level, through web services, or via text and excel files.



HIGHLIGHTING SOME OF OUR SUCCESS STORIES

CHAMBER OF COMMERCE INDUSTRY AND AGRICULTURE



“People365 by SETS enabled us to improve our efficiency and productivity by automating our employees’ time attendance management. We were looking for a consolidated solution that could provide us with strong and centralized reporting tools, efficiently and in no time.

The Time Attendance System from People365 is a highly parameterized solution that can support the configuration of multiple schedules and projects. We are very satisfied with our investment and have achieved the end results we were aiming for. I would definitely recommend People365 and SETS to other institutions looking to automate their HR operations.”

Dory Abou Saab - Chamber of Commerce Industry and Agriculture, Lebanon

ETHEL CHOCOLATE



“People365 is a reliable, flexible and user-friendly system that can adapt to any scenario needed. The automation of our time attendance and payroll operations helped us improve our efficiency, reduce human errors and maximize our ROI. The time attendance is always accurate and reliable now; all the reports are just one click away and the payroll process is no longer a hassle!

It was the smoothest and easiest implementation ever, where SETS team was very professional and supportive, serving all our requests promptly.”

Joelle Saadeh Hamzo, HR Manager - Ethel Chocolate

AMERICAN UNIVERSITY OF BEIRUT



“While our old approach to procurement enabled us to choose from a range of hardware suppliers, we were determined to improve the efficiency of the procurement process. We also needed assurance of quality after-sales care and support services, which are essentials for us because we buy such a large number of PCs.”

Rim Kadi - American University of Beirut

IPSOS



“SETS is a very reliable IT solution provider. We feel that we are constantly protected, and enjoy a solid and reassuring relationship with them.”

Joseph Habre - Ipsos

AZM & SAADE



“SETS is a professional IT company. We had a good experience all through the way.”

Ali Akkwai - Azm & Saade

MAKASSED PHILANTHROPIC ISLAMIC ASSOCIATION



“SETS is a partner to Makassed Philanthropic Islamic Association and not just a supplier. They helped us move forward and enhance our business. This relationship has been guided by mutual experience, sharing, honesty and credibility.”

Adla Chatila - Makassed Philanthropic Islamic Association of Beirut

SANITA



“SETS has proved to be the best in terms of quality, expertise, and support; therefore we have built with them a strong relationship based on professionalism and loyalty.”

George El Hachem - Sanita

BEIRUT ARAB UNIVERSITY



“SETS is one of the major companies in its field with a credible and well-known reputation. Our relationship with the company was one of mutual benefit and we look forward to maintaining it for years to come.”

Amine Houry - Beirut Arab University

LIGHT METAL PRODUCTS



“SETS is a professional company that has an excellent team. I don't worry about any problem I face, because I know they have the solution. I recommend SETS for further clients. This success achieved by SETS is due to the close and excellent follow up by the upper management.”

Elias Farah - Light Metal Products SAL

MIDDLE EAST AIRLINES



“Our relationship with SETS is genuine. They never rejected any of our requests, and they were always up to the task in delivering excellent service and support.”

Ghada Gholam - Middle East Airlines

KHATIB & ALAMI



“SETS is a unique company and one of the best around when it comes to quality of product and services. We are working hand-in-hand towards building a long-term relationship.”

Adnan Yassine - Khatib & Alami

LIBANO-SUISSE



“We were looking for a new system that would enable us to follow clear HR practices and align our processes with the strategic goals of the company.

People365 from SETS is a very flexible solution that will help us unify and consolidate all our data within the region, providing us with so many tools to save time and reduce errors through automating our HR operations.

The SETS team was very professional and had answers to all our needs and concerns.”

Mary Asmar - Libano-Suisse

UNISOL



“We would recommend SETS to every other company in order to simplify their daily business processes through flexibility, responsiveness and efficiency.”

Sami Saber Hassan - Unisol

CIVIL AVIATION



“We are highly satisfied with SETS. They are the only company we renewed our deal with without a bid. It is a solid and strategic relationship guarded by mutual trust and credibility. We look forward to increasing our dealings with SETS.”

Mohamad Saad - Civil Aviation Management

BYBLOS BANK



“During the entire period of our partnership, the SETS team exhibited professionalism when it came to problem solving, implementing changes, timely responses and delivering superior quality.”

Rosette Sleiman Boustany - Byblos Bank

LEBANESE INTERNATIONAL UNIVERSITY



“SETS provided the latest technology upgrades and professional advice. We consider SETS a business partner. It is a strategic relationship through which they consult on any solutions we may forego.”

Ayman Dayekh - Lebanese International University

**Lebanon:**

Beirut, Downtown | Emir Bechir Street | Bashoura 933, Lazaristes Building
Bloc A2-1, 5th & 6th floor | P.O. Box: 3553-11 | Riad El Solh
Tel: +961 1975555 | Mob: +961 3208900 | Fax: +961 1999889

sets@sets.com.lb

UAE:

Office No. 129, 1st Floor, Jafza View 18 & 19,
Jebel Ali Free Zone | P.O. Box: 263031
Tel: +971 48137746 | Fax: +971 48840877

sets-uae@sets.com.lb

KSA:

8292 King Fahed Road, Al Mohammadiyah - Unit 2,
P.O. Box 12363-4314 Riyadh - Kingdom of Saudi Arabia
Tel: +966 112034521

sets-ksa@sets.com.lb

Jordan:

King Abdullah II St. | King Hussein Business Park
Bldg. 10 - 2nd Floor, P.O. Box 954285 – 11954 Amman, Jordan
Tel: +962 65805387 | Fax: +962 65805375

jordangroup@sets.com.lb

www.sets.com.lb